

## Perforated Corrugated Sheet 38/151 Formu Acoustic Wall



### Ürün Tanımı

Assan Panel offers 38/151, 27/200, 18/838 and 50/207 profiled sheets from acoustical metal for walls, roofs and curved roofs. With perforated design, firms prefer to use this corrugated sheet as a last layer of sound insulation solutions.



## Performance Advantages

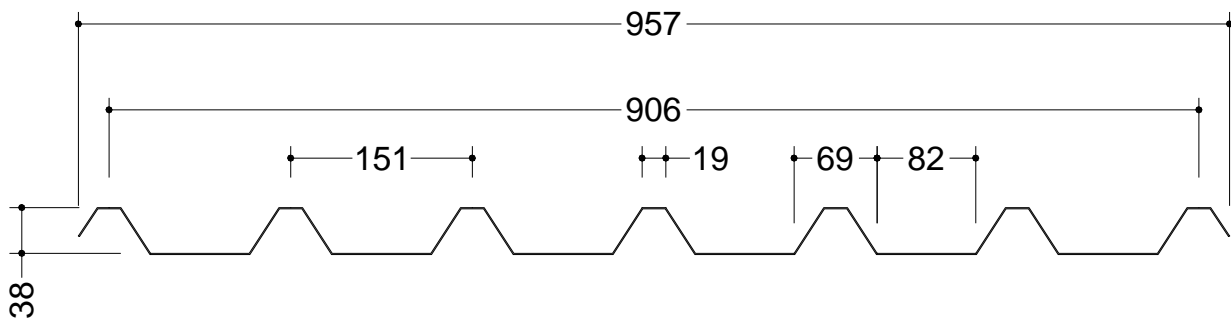
There are many RAL colour options.

Depending on the degree and type of corrosion and final end use, types of coatings system can be selected. (Polyester, PvdF, Plastisol, PVC)

Modular width of the corrugated sheet can be 755 mm.

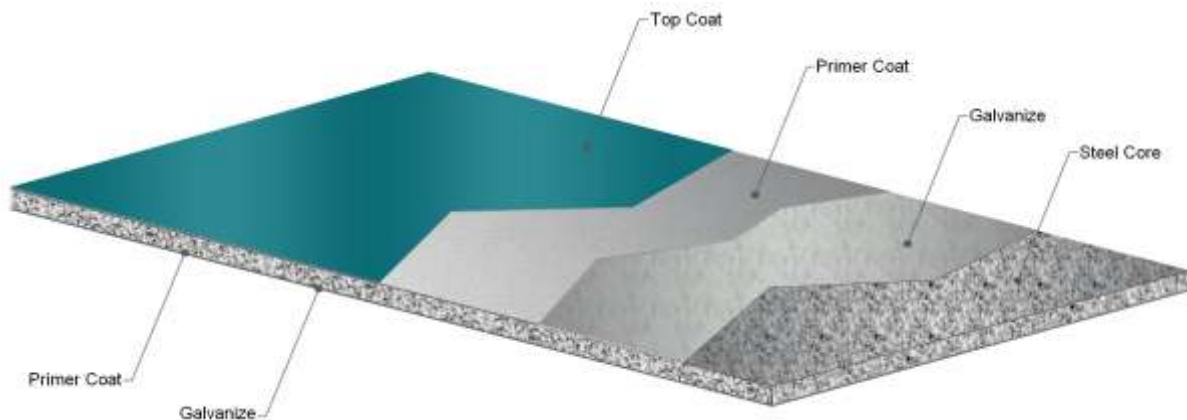
It enables to apply them as acoustic inside wall and roof coverings.

## Dimension



<b>Modular width</b>	906 mm
<b>Minimum length</b>	1 m
<b>Maximum length</b>	12 m

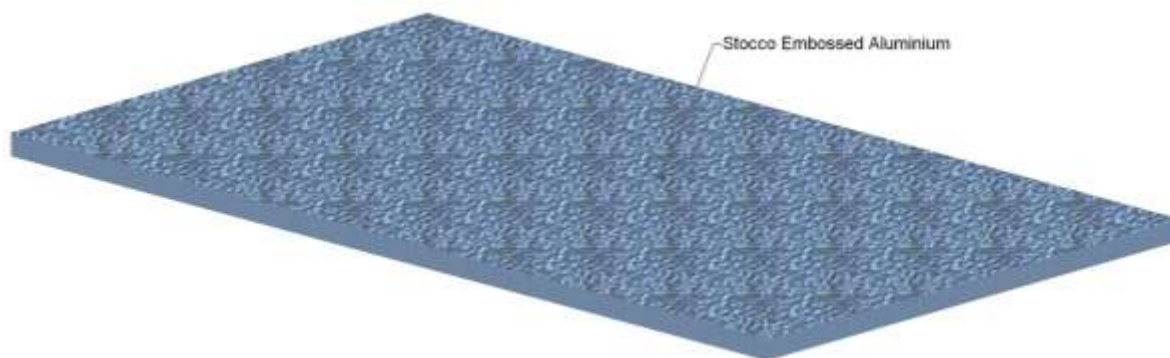
## Metallic Surface



### Prepainted Galvanized Steel Surface

<b>Type</b>	Prepainted galvanized steel
<b>Sheet thickness</b>	0,50-0,80 mm
<b>Steel Faces yield strength</b>	min. 220 N/mm <sup>2</sup>
<b>Thickness tolerance (EN 10143)</b>	Nominal
<b>Length tolerance</b>	±3 mm
<b>Steel quality (EN 10327)</b>	DX51 D+Z
<b>Hot dip coated steel grade (EN 10327)</b>	100-275 gr/m <sup>2</sup>
<b>Paint type</b>	Polyester, PvdF, Plastisol, PVC

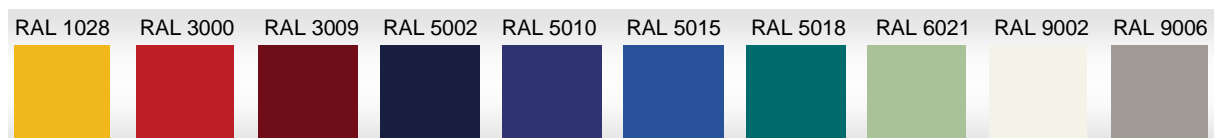




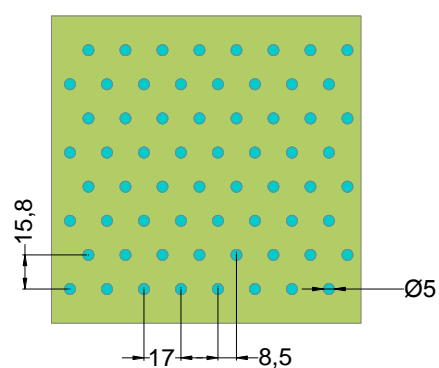
### Aluminium Surface

Type	Aluminium
Sheet thickness	0,40-0,80 mm
Aluminium Faces yield strength	min. 140 N/mm <sup>3</sup>
Thickness tolerance (EN 485-4)	Nominal
Length tolerance	±3 mm
Temper (EN 485-2)	H16 – H26
Alloy (EN 485-2)	AW 3000 series
Surface	Stocco Embossed or painted

### Standart Colors



### Perforation



### Gallery





## Assan Panel Wall & Roof Cladding Systems



MASTER PANEL R2



MASTER PANEL R3



MASTER PANEL R7



MASTER PANEL W



MASTER PANEL R4



MASTER PANEL CS



PVC MEMBRANE MASTER PANEL R7M



MASTER PANEL R7K



CORRUGATED SHEET 18/838



CORRUGATED SHEET 27/200



CORRUGATED SHEET 38/151



CORRUGATED SHEET 50/207



PERFORATED CORRUGATED SHEET 38/151

**ASSAN PANEL**  
SANAYİ VE TİCARET A.Ş.

**Tuzla Fac. :** E-5 Karayolu üzeri ASSAN Tesisleri 32. km. 34940 Tuzla/ İSTANBUL

**Tel:** +90 216 581 17 00 - **Fax:** +90 216 446 38 55

**İskenderun Fac. :** Organize Sanayi Bölgesi Sarıseki İskenderun/HATAY

**E-mail:** assanpanel@kibarholding.com - **web:** www.assanpanel.com.tr

ASSAN PANEL reserves the right to change the information given in this brochure without notice.  
Corrugated Sheet 38/151AC Product Catalogues T38AC|03|09



**ASSAN PANEL**  
"Sandwich Panel Expert"